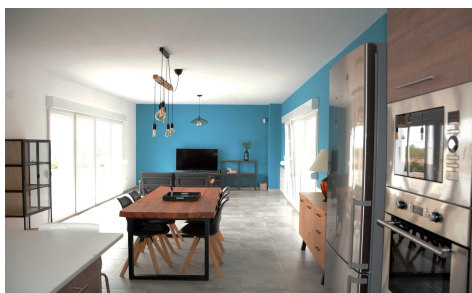


MLSC6896669

**Country House in Macisvenda****€357,000**

3



2



N/A

5,000m²

N/A

Exclusive contemporary villa built in 2020, designed to offer comfort, functionality, and a unique connection with nature. With a built area of 159 m², this exceptional property stands out for its spacious interiors and well-planned layout. The living area features a bright open-plan lounge, dining room, and modern kitchen, creating a welcoming atmosphere ideal for both everyday living a...(Ask for More Details!)