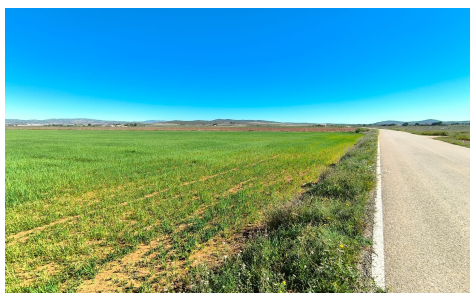
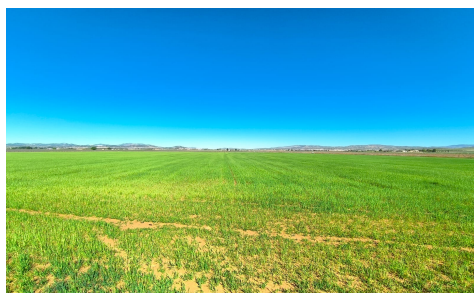


MLSC9674846

**Land in Yecla****€67,500**

0



0

5m²49,754m²

N/A

Agricultural & Building land near Yecla. Five hectares of fertile land, suitable for growing crops (olives, almonds, vine, peaches, apricots, cherries, pears, pistachios, vegetable), for cattle, sheep, or horse pastures, or for building a house, offering an interesting development/investment opportunity, and a self-sufficient lifestyle. Previously used for growing cereals, this currently ...(Ask for More Details!)