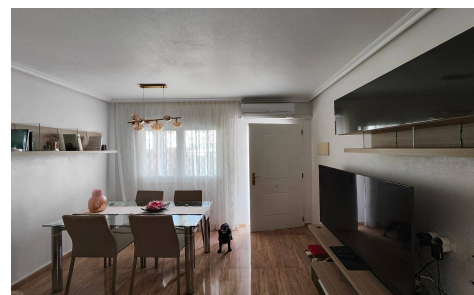
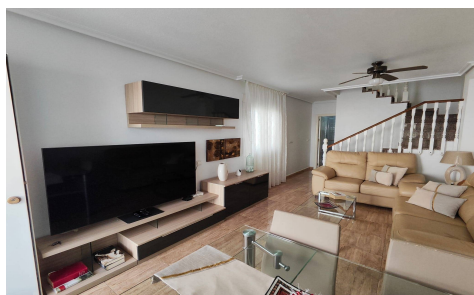



**semi detached in San Pedro Del Pinatar**
**€210,000**

**2**

**2**

**81m<sup>2</sup>**

**60m<sup>2</sup>**


We present to you this charming semi-detached house, ready to move into, located in one of the most sought-after areas of the Murcian coast. With a built area of 81 m<sup>2</sup> on a 60 m<sup>2</sup> plot, this home stands out for its excellent layout, brightness, and comfort—ideal as a permanent residence or for enjoying your holidays near the sea. Just 900 meters from the beach, the property features two s...(Ask for More Details!)