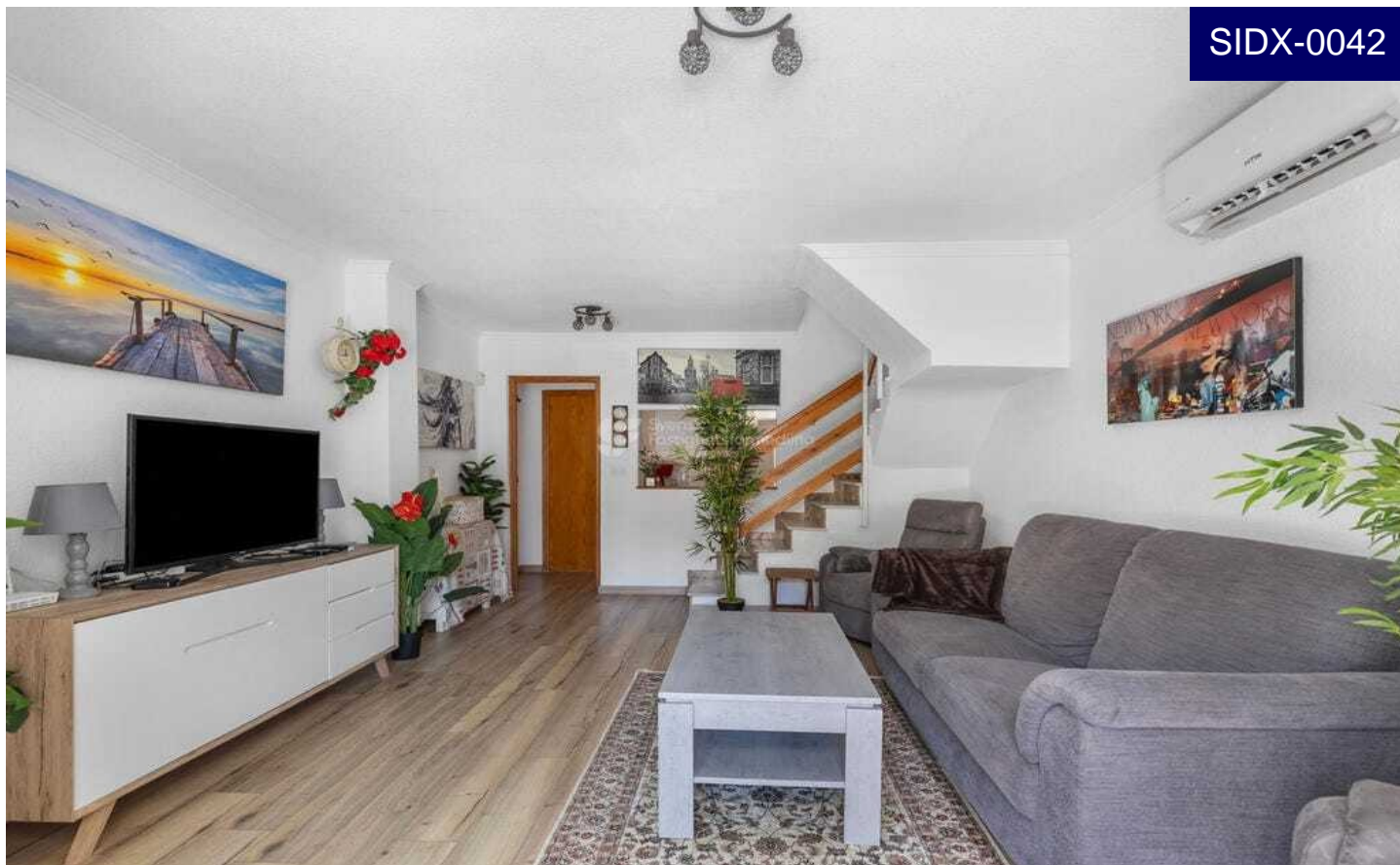


SIDX-0042

**Terraced house in La Rosaleda****€184,000**

3



1

72m²77m²

terraced house 650m from the sea. Just 650 meters from the Mediterranean Sea, this charming and move-in-ready townhouse is located in the highly sought-after area of Rosaleda. With shops, restaurants, and all daily amenities within walking distance, this property offers the perfect balance between tranquility and vibrant coastal living. One of the standout features of this home is its exc...(Ask for More Details!)