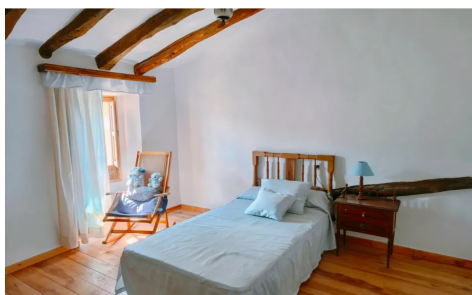



MLSC6814321
Country House in Yecla
€159,000

6

3

338m²

N/A

N/A

This spectacular semi-detached traditional house has been expertly restored using top-quality materials and craftsmanship, blending rustic charm with modern comfort. With 211 m² of living space over two floors, and a total of 338 m² built, including a spacious 110 m² garage, the property offers: 6 bedrooms, 3 bathrooms A bright living room with fireplace A fully equipped kitchen and ston...(Ask for More Details!)